



**Syngene**

Putting Science to Work

# Discovery Services

Innovate

Integrate

Customize

Accelerate



# 30+ years of putting science to work



## A global CRO/CDMO

- Integrated drug discovery, development and manufacturing service provider
- Small molecules and biologics, ADCs, oligonucleotides
- Listed on Indian stock exchanges (NSE and BSE)



## Scientific ecosystem

- 2.2 Mn sq. ft. world-class R&D and manufacturing infrastructure
- Sites in Bangalore, Mangalore, and Hyderabad
- 5656 qualified scientists including 530 PhDs
- Highly effective supply chain practices



## IP position

- IP assigned to clients
- Strong track record of data integrity and security
- Over 400 patent assignments by clients recognizing Syngene



## Marquee clients

- 400+ active clients last FY
- Partnering with large / mid-size / emerging biopharma (EBP) and other industries
- Clients concentrated in US, Europe & Japan
- Track record of working with diverse industry sectors



## Quality focus

- Quality driven organization
- Excellent track record of compliance with global regulators
- US FDA, EMA, ANVISA and PMDA approved, GLP certified, Ministry of Health of Russian Federation, AAALAC & CAP accredited/certified facilities
- 15+ regulatory and 160+ client audits in the last 3 years



## Track record

- Collaborations and partnerships to deliver numerous clinical candidates
- Delivery history for integrated CMC programs towards FIH and beyond

# SynVent integrated drug discovery

Across multiple therapeutic areas and modalities to drive innovation and speed

## Therapeutic areas

- Oncology
- Immunology
- Neuroscience
- Infectious diseases
- Cardiovascular and metabolism
- Inflammation
- Rare/orphan diseases

## Modalities

- Small molecules
- Peptides
- Oligonucleotides
- Antibodies
- Antibody drug conjugates
- PROTACs
- CAR-Ts

## Drug discovery at a global scale

1600

scientists, with  
95%+ Ms/Ph.D.

600,000

sq. ft. of  
lab space

200+

global  
clients

## Efficiency through co-localization of team members and capabilities

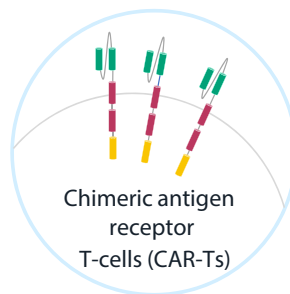
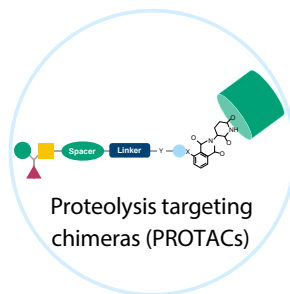
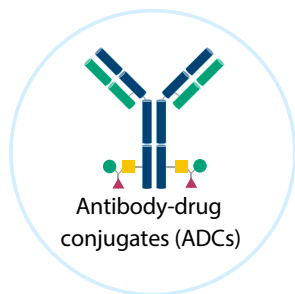
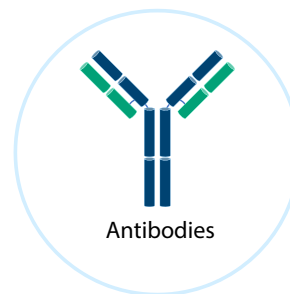
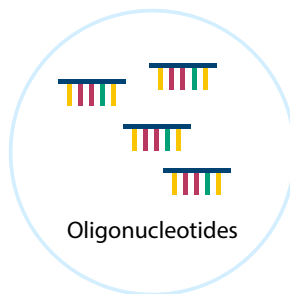
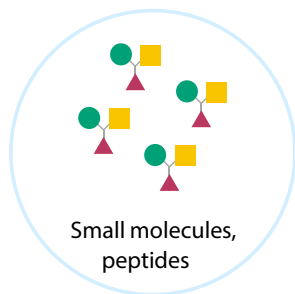
- IDD programs for 8 clients over 6 therapeutic areas
- Syngene-Synvent for therapeutic discovery on behalf of clients
- High rate of repeat business and return-clients





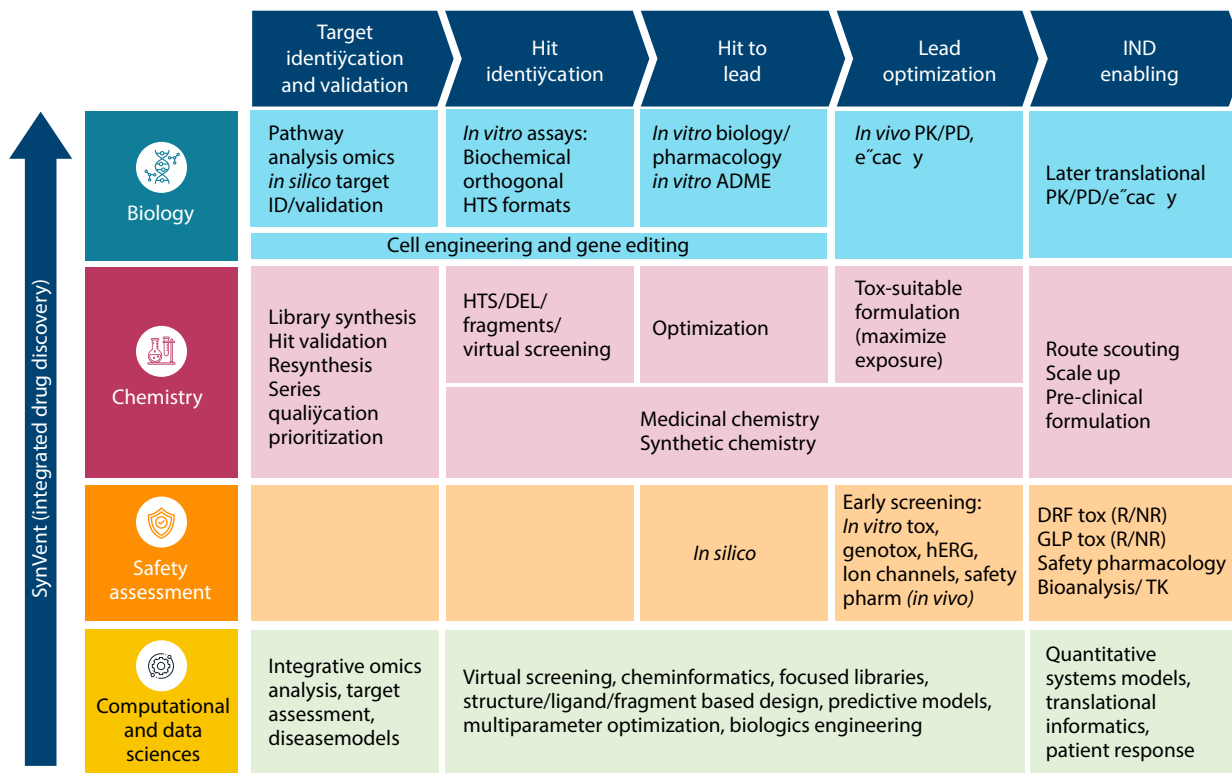
# Discovery toolbox

We have the capabilities to apply the most appropriate modality for target validation and therapeutic discovery



# End-to-end discovery platform

Our end-to-end platform allows us to offer integrated as well as standalone services across the discovery continuum



We deliver our services (both integrated & functional) via a range of proven collaboration models



Dedicated R&D labs



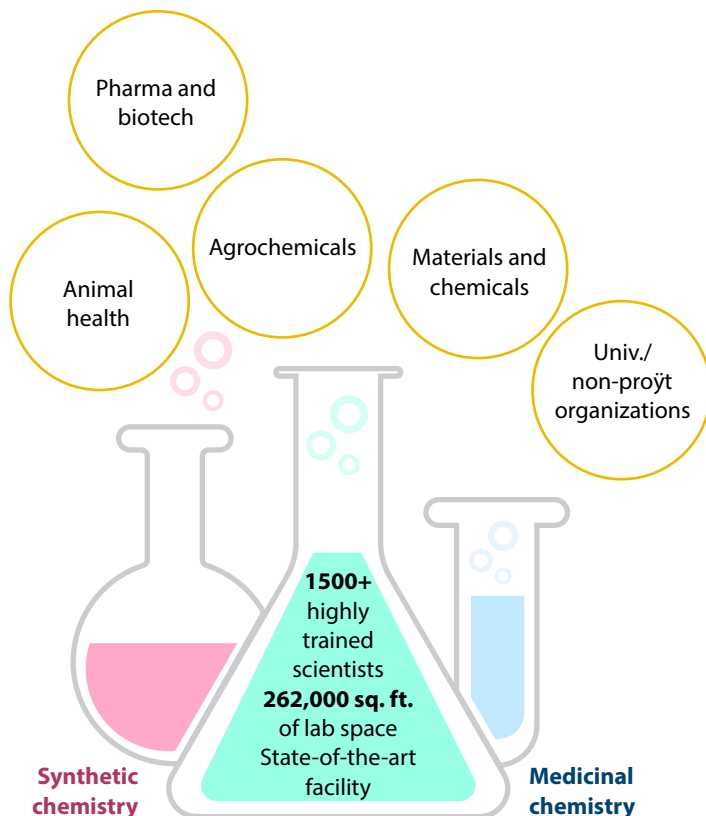
FTE



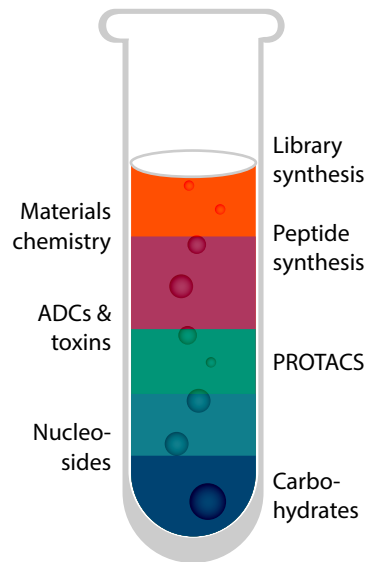
FFS

# Discovery chemistry

Discovery chemistry at syngene is delivered by 1500+ highly qualified scientists, backed by strong analytical chemistry support, robust IT infrastructure and ELN, as well as efficient data and compound management



**Integrated & collaborative drug discovery**  
Seamless co-ordination between chemistry, biology, DMPK and animal studies



**Analytical facilities supported by a team of 80 people**  
**Strong IT support for ELN, data and compound management**

# Discovery biology

The discovery biology team supports drug discovery across multi-modal platforms including small and large molecules as well as cell and gene therapy, across multiple therapy areas. Our diverse team of scientists solve complex biological problems in an integrated fashion, embracing scientific excellence, operational efficiency and commercial competitiveness.



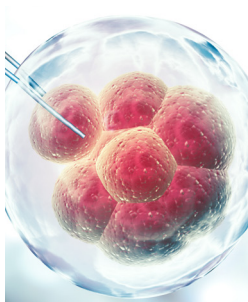
**700+**  
scientists



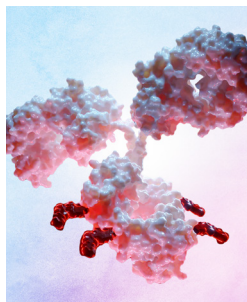
**110,000**  
sq. ft lab space  
state of the art  
infrastructure



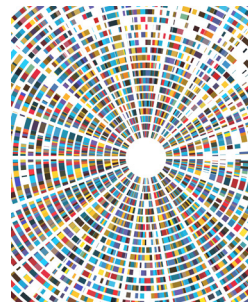
Protein  
sciences



Cell  
engineering



Antibody discovery  
and engineering



Genomics and  
translational



Assay biology  
& screening



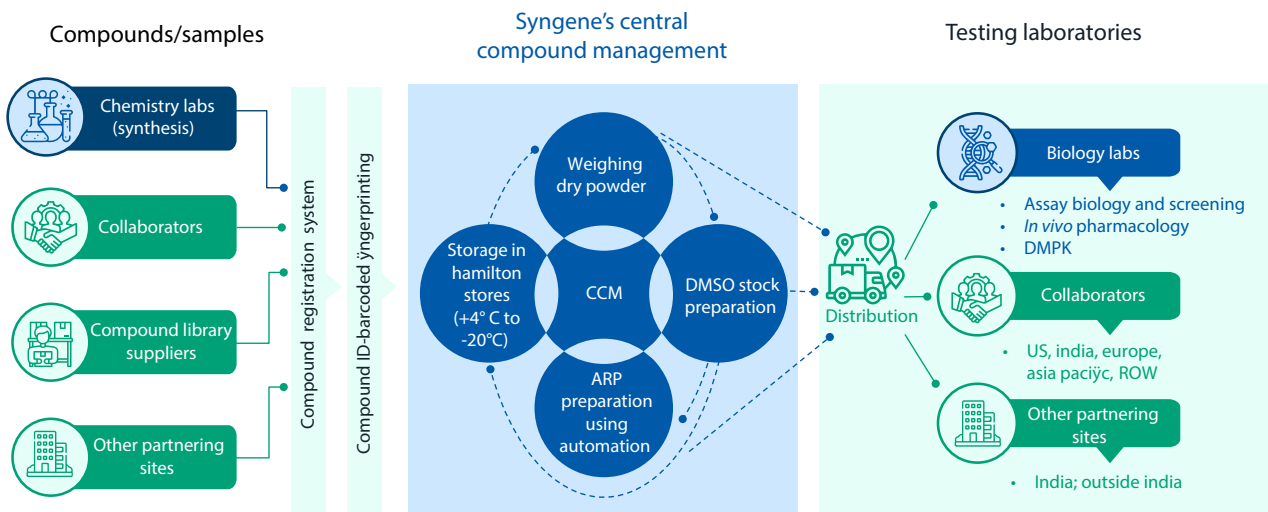
ADME DMPK



*In vivo*  
pharmacology

# Compound management services

Syngene offers a comprehensive, fully automated, state-of-the-art, centralized compound management (CCM) that ensures material integrity, traceability, accessibility, and efficiency in dispensing.



Solid storage capacity: 70,000 compounds

Liquid storage capacity: > 0.3 million tubes in high-density racks with additional scope for expansion by 3X

Automated compound storage system:

- Hamilton verso at +4°C
- Hamilton verso at -20°C

Liquid handling systems

- Fluent from tecan integrated with capper/decapper from Hamilton and plate seal
- ECHO 650



# Safety assessment services

Full range of toxicology services for comprehensive nonclinical development of pharmaceuticals

Exploratory studies	GLP studies	Phase I	Phase II	Phase III	Specialty studies
Pharmacokinetics	Analytical and bioanalytical studies to support safety tox program	GLP repeat dose studies & genetic toxicology	Sub-chronic toxicity study		<i>In silico</i> & risk assessment
	Repeat dose toxicology (2 species)				Reproductive toxicology (fertility/ pre and postnatal & embryofetal development)
Genotoxicity ( <i>in vitro/in vivo</i> )			Chronic toxicology & carcinogenicity		
	(MTD/dose escalation/short-term repeat dose toxicology)				
Genotoxicity screening ( <i>in vitro</i> )	Toxicokinetics				Extractables & leachables
	Core battery safety pharmacology				PDE & OEL reports
Safety pharmacology: CNS, respiratory, CV	Reproductive toxicology (seg I, seg II & seg III)				<i>In vitro</i>
					Cytotoxicity
					Skin sensitization/irritation
					Phototoxicity
					<i>In vivo</i>
					Impurity qualification
					Medical device/ ISO-10993
					Dermal tox
					Local tolerance
					Phototoxicity

# Computational and data sciences capabilities

Syngene's computational and data sciences capabilities enable informed decisions at all stages of the drug discovery continuum



Target identification and validation



Hit identification



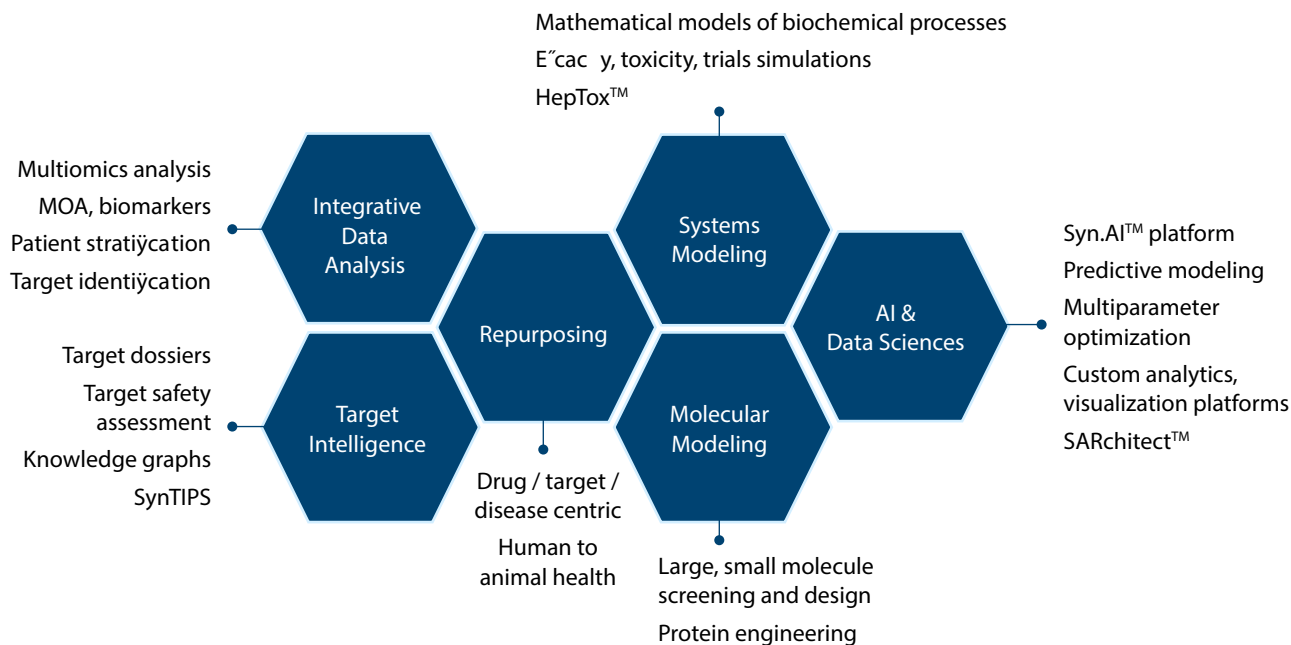
Hit to lead



Lead optimization



Candidate selection



















**Syngene**  
Putting Science to Work

## About Syngene

Syngene International Ltd. (BSE: 539268, NSE: SYNGENE, ISIN: INE398R01022) is an integrated research, development, and manufacturing services company serving the global pharmaceutical, biotechnology, nutrition, animal health, consumer goods, and specialty chemical sectors. Syngene's 6000+ scientists offer both skills and the capacity to deliver great science, robust data security, and quality manufacturing, at speed, to improve time-to-market and lower the cost of innovation. With a combination of dedicated research facilities for Baxter, and Bristol-Myers Squibb, as well as 2.2 million sq. ft. of specialist discovery, development and manufacturing facilities, Syngene works with biotech companies pursuing leading-edge science as well as multinationals, including GSK, Zoetis, and Merck KGaA.

For more details, visit [www.syngeneintl.com](http://www.syngeneintl.com) or write to us at [bdc@syngeneintl.com](mailto:bdc@syngeneintl.com)

© 2026 Syngene International Limited, All Rights Reserved.

Stay Connected

